

INSTRUCTION MANUAL

RANKOR

AUTO AIR COMPRESSOR

RAC16001



Made in China

0725-V01

www.rankortools.com

READ AND FOLLOW ALL SAFETY PRECAUTIONS IN THE INSTRUCTION MANUAL.

Thank you for choosing **RANKOR** tools.

RANKOR products are renowned for their reliability, high performance, and superior quality. Our team is committed to continuous innovation, providing customers with upgraded tools and a comfortable user experience. Additionally, we offer exceptional after-sales service and promise to resolve any technical issues for our customers as swiftly as possible.

Before operating the tools, please read all warnings, cautions, and instructions on the tool labels and in the owner's manual. Note that the safety information provided does not cover all potential conditions or situations that may arise. Thoroughly review the owner's manual for complete safety guidelines and operating procedures. Failure to follow the instructions and safety information may lead to severe **INJURY** or **DEATH**.

CONTENTS

SAFETY NOTES	2
PRODUCT OVERVIEW	5
SPECIFICATION	6
OPERATING INSTRUCTIONS	6
MAINTENANCE	7
SPARE PARTS LIST	8
EXPLODED VIEW	9

SAFETY NOTES



WARNING: Read all safety warnings and all instructions. Failure to follow the warnings and instructions may result in electric shock, fire, or severe injury. Save all warnings and instructions for future reference.

The term “power tool” in the safety notes refers to your mains-operated (corded) power tool or battery-operated (cordless) power tool.

General safety notes

1. Work area safety

- 1) DO NOT operate power tools in explosive atmospheres, such as in flammable liquids, gases or dust. Power tools create sparks that may ignite the dust or fumes.
- 2) Keep the work area clean and well-lit. Cluttered or dark areas invite accidents.
- 3) Keep children and bystanders away while operating a power tool. Distractions can cause loss of control.

2. Electrical safety

- 1) DO NOT expose the tool to rain or wet conditions. Moisture entering the tool may increase the risk of electric shock or cause malfunction.
- 2) DO NOT attempt to open or modify the internal electrical components. Unauthorized tampering may lead to electric shock or serious malfunction.
- 3) Use the tool only with compatible power sources as specified by the manufacturer.
- 4) Avoid body contact with earthed or grounded surfaces such as pipes, radiators, ranges, and refrigerators. Contact with such surfaces increases the risk of electric shock.
- 5) Keep the tool clean and dry. Contamination with conductive materials such as dust, metal shavings, or moisture may lead to short circuits.

3. Personal safety

- 1) DO NOT overreach. Keep proper footing and balance at all times. This enables better control of the power tool in unexpected situations.
- 2) DO NOT use a power tool while the user is tired or under the influence of drugs, alcohol or medication. A moment of inattention while operating power tools may result in serious personal injury.
- 3) DO NOT wear loose clothing or jewellery. Keep hair, clothing and gloves away from moving parts. Loose clothes, jewellery or long hair can be caught in moving parts.
- 4) Stay alert, watch what you are doing and use common sense when operating a power tool.
- 5) Use personal protective equipment. Always wear eye protection. Protective equipment such as dust masks, non-skid safety shoes, hard hats, and hearing protection for appropriate conditions will reduce personal injuries.
- 6) Prevent accidental activation. Always verify the power switch is in the OFF position before connecting to a power source, transporting, or handling the device. Never carry the tool with your finger on the switch or operate it while the switch is engaged, as this may lead to hazardous situations.
- 7) Remove all adjustment tools before operation. Ensure any wrenches or keys are detached from the device before powering it on. Leaving tools attached to rotating components can cause serious injury.
- 8) If devices are provided for connecting dust extraction and collection facilities, ensure these are connected and properly used. The use of dust collection can reduce dust-related hazards.

4. Power tool use and care

- 1) DO NOT force the power tool. Use the correct power tool for your application. The correct power tool will do the job better and safer at the rate for which it was designed.
- 2) DO NOT use the power tool if the switch does not turn on and off. Any power tool that cannot be controlled with the switch is dangerous and must be repaired.
- 3) Keep cutting tools sharp and clean. Properly maintained cutting tools with sharp edges are less likely to bind and are easier to control.
- 4) Disconnect the plug from the power source or the battery pack from the power tool before making any adjustments, changing accessories, or storing power tools. Such preventive safety measures reduce the risk of starting the power tool accidentally.
- 5) Store idle power tools out of the reach of children and do not allow persons unfamiliar with the power tool or these instructions to operate the power tool. Improper use of power tools by untrained individuals may result in serious injury or property damage.
- 6) Maintain power tools. Check for misalignment or binding of moving parts, breakage of parts and any other condition that may affect the power tool's operation. If damaged, have the power tool repaired before use. Failure to properly maintain power tools can lead to malfunction and increase the risk of accidents.
- 7) Use the power tool, accessories, tool sets, etc., in accordance with these instructions, taking into account the working conditions and the work to be performed. Using the power tool for operations different from those intended could result in a hazardous situation.

Additional safety notes

- 1) DO NOT abuse the cord or use it for carrying, pulling, or unplugging the tool. Keep the cord away from heat, oil, esharp, dges, or moving parts.
- 2) Ensure that the power supply matches the tool's rated voltage. Connecting to an improper voltage may result in a risk of electric shock or fire.
- 3) To reduce the risk of electric shock, this tool must be properly grounded. Grounding provides a low-resistance path for the electric current if a malfunction occurs.
- 4) If an extension cord is necessary, ensure that it is rated for outdoor use and has sufficient current capacity. An undersized cord may result in voltage drop and loss of power or overheating.
- 5) When operating a power tool outdoors, use a residual current device (RCD) to reduce the risk of electric shock.

Specific safety notes


1. Intended use


This auto air compressor is a multi-purpose device suitable for:


- 1) Vehicle maintenance (tires for cars, motorcycles, bicycles, etc.)
- 2) Everyday inflatables (air bed, rafts, sports balls, etc.)

It is ideal for both automotive and household/outdoor use.

2. Safety notes for auto air compressor

 **WARNING: Limit continuous operation to 10 minutes maximum.** Extended use may cause overheating. If overheating occurs, immediately power off the unit and allow it to cool for at least 10 minutes before reuse.

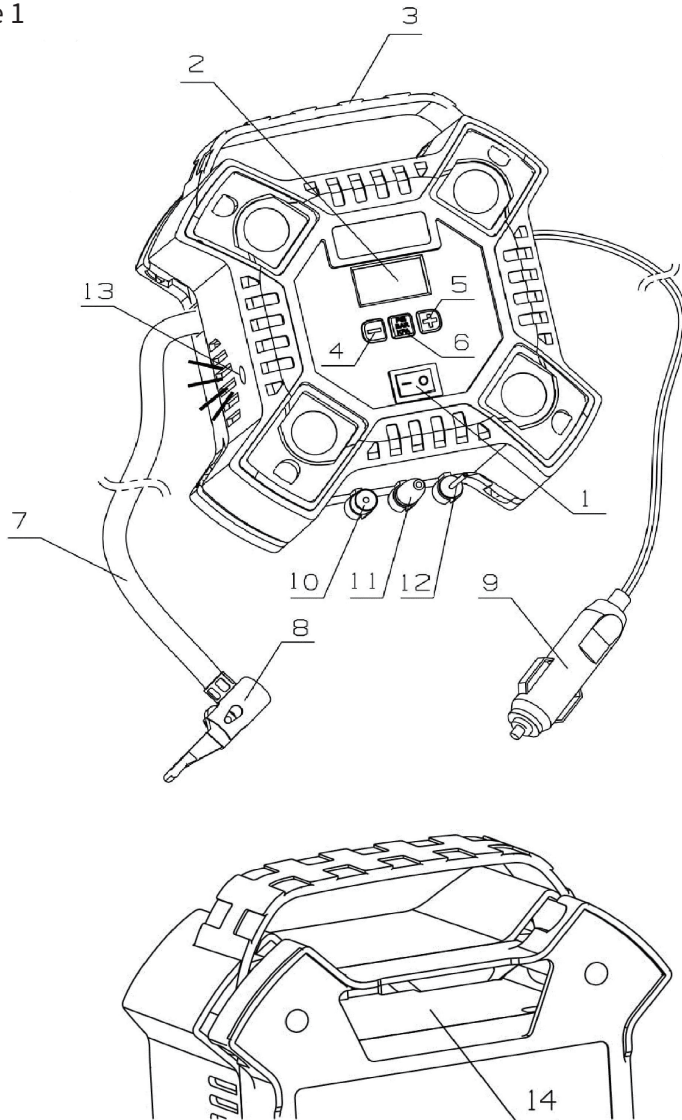
 **WARNING: Never inflate objects beyond their specified maximum pressure.** Overinflation may cause bursting, resulting in injury and/or property damage.

 **WARNING: An undersized compressed air system will reduce the efficiency of your appliance.**

- 1) DO NOT operate the air compressor in ambient temperatures below +41°F(+5°C).
- 2) DO NOT exceed the air compressor's rated capacity. This unit is not designed for inflating trucks, tractors, or other large vehicle tires.
- 3) DO NOT use when fatigued, distracted, or feeling unwell. Always maintain full attention during operation.
- 4) This auto air compressor is not intended for use by children or persons with reduced physical, sensory, or mental capabilities, or lack of experience and knowledge. Cleaning and user maintenance shall not be performed by children without supervision.
- 5) Never leave the air compressor unattended during operation.
- 6) Always verify the ON/OFF switch is in the OFF position before connecting to the power supply.
- 7) Never use with or near flammable, explosive, or combustible materials.
- 8) Use the air compressor solely for its designated purposes as described in this manual.
- 9) Keep the air compressor clean, dry, and free from oil or grease contamination at all times.
- 10) Never clean the unit with gasoline or other flammable liquids. Residual vapors may ignite and cause explosions.
- 11) Never operate with a damaged power cord or plug. Disconnect immediately and have repaired by qualified personnel.
- 12) Never touch damaged cords during operation. Unplug immediately and contact authorized service.
- 13) Keep appliance dry. Never use in damp/wet conditions.
- 14) For outdoor use: Must use 30mA RCD protection and outdoor-rated extension cords only.
- 15) Never carry or hang the appliance by power cord. Route cords rearward to avoid damage.
- 16) The compressor and hoses can get very hot during operation. Touching them can cause burns.
- 17) Ensure intake air contains no flammable vapors/particles that could cause explosions.
- 18) When disconnecting hoses: Grip couplings firmly and release all pressure first to prevent whipping.
- 19) Inspect all connections and supply lines. All maintenance units, couplings and hoses must match the appliance's specified pressure and airflow requirements. Insufficient pressure will impair appliance performance; excessive pressure may result in property damage or personal injury. Prevent hose damage by avoiding kinks, crushing, chemical exposure and sharp edges.
- 20) Maintain proper hose clamp tightness at all times. Loose or damaged clamps may lead to uncontrolled air leakage.
- 21) Replace damaged hoses immediately. A compromised supply line can cause violent hose whipping and serious injury.
- 22) Never inhale exhaust air directly.
- 23) Hoses must be rated for minimum 150% of the system's maximum operating pressure.
- 24) The tool and the supply hose must be fitted with a hose coupling that allows the pressure of the coupling hose to be dispersed completely during disconnection.
- 25) Prevent eye exposure to exhaust air, which may contain compressor-generated water, oil, metal particles or other contaminants that could harm your health.

PRODUCT OVERVIEW

Figure 1



- 1. ON/OFF Switch
- 2. LCD Display
- 3. Carrying Handle
- 4. "-" Button

- 5. "+" Button
- 6. Unit Shift Button
- 7. Air Hoses
- 8. Air Chuck

- 9. 12V DC Vehicle Connector
- 10. Tire Valve Adaptor
- 11. Air Bed Adaptor
- 12. Ball Adaptor

- 13. LED Light
- 14. 12V DC Connector
Storage Compartment

SPECIFICATIONS

Model	RAC16001
Rated voltage	DC 12V
Rated current	7.2A
Flow rate	35 L/min
Max. pressure	160 PSI

OPERATING INSTRUCTIONS

NOTE: The auto air compressor vibrates during operation. Therefore, always put it down during operation. Remove the required accessories from the accessory compartment (Figure 1, Item 10, 11, 12).

Fitting the accessories

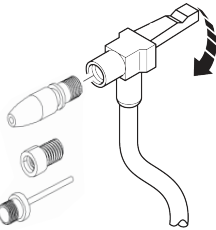


Figure 2

The auto air compressor is supplied with a tire valve adapter, air bed adapter, and ball adapter stored on the unit's base. (Figure 2)

- 1) To install the tire valve adaptor, ensure the lever is in the raised position.
- 2) Align the tire valve adapter over the stem of either the air bed adapter or ball adapter.
- 3) Secure the connection by pressing the air chuck lever downward until locked.
- 5) Insert the air bed adapter or ball adapter into the item requiring inflation.

Power the LCD display

WARNING: DO NOT operate the auto air compressor while the vehicle engine is running.

Note: Verify your 12V accessory socket is active. Some vehicle sockets only receive power when the ignition is in the accessory position.

To activate the display via the 12V DC adapter, simply insert the 12V vehicle connector (Figure 1, Item 9) into your vehicle's 12V accessory socket.

Quick start

WARNING: Never leave the air compressor unattended in this mode. Overinflation may cause tire or item rupture.

For immediate use without automatic shut-off:

- 1) Connect the 12V DC vehicle connector to the accessory socket to power the LCD display.
- 2) Toggle between measurement units (PSI, BAR, kPa) by pressing the unit shift button (Figure 1, Item 6) until the required unit is displayed.
- 3) Attach the air chuck (Figure 1, Item 8) (with optional accessory) to the inflation target, ensuring the lever is in the locked (down) position.



Note: Confirm proper seating of the adapter before inflation.

- 1) Activate the air compressor by switching the main power button (Figure 1, Item 1) to ON.
- 2) To stop inflation or when finished, switch the main power button (Figure 1, Item 1) to OFF.

Setting the automatic shut-off pressure



Note: The LCD displays inflation pressures only during active use.

- 1) To switch between the different units (PSI, BAR, kPa), press the unit shift button (Figure 1, Item 6) until the required unit is displayed.
- 2) Hold either “+” or “-” button (Figure 1, Item 4/5) for 3 seconds to increment/decrement to your target pressure value.
- 3) After 3 seconds, the display will flash and reset to “0.0”, this indicates successful setting.
- 4) Securely attach the air chuck (with accessories if needed) to the inflation target, ensuring the adapter lever is locked in the down position.
- 5) To activate the air compressor, press the main switch (Figure 1, Item 1) to the ON position.
- 6) The unit will automatically shut off when reaching your preset pressure.



Note: A slight pressure drop after shutdown is normal due to thermal contraction.

- 1) For manual shutdown, press the main switch (Figure 1, Item 1) to OFF at any time.
- 2) Disconnect the valve adapter from the inflated item. Unplug the 12V connector (Figure 1, Item 9) from your vehicle's 12V socket.



Note: Power interruption erases all presets as a safety precaution against overinflation. Reconfigure using these instructions when restarting.

Using the air compressor as a pressure gauge

- 1) Connect the air chuck (Figure 1, Item 8) to the item to be checked.
- 2) The LCD will display the current pressure.
- 3) After measurement, properly stow the air hose.

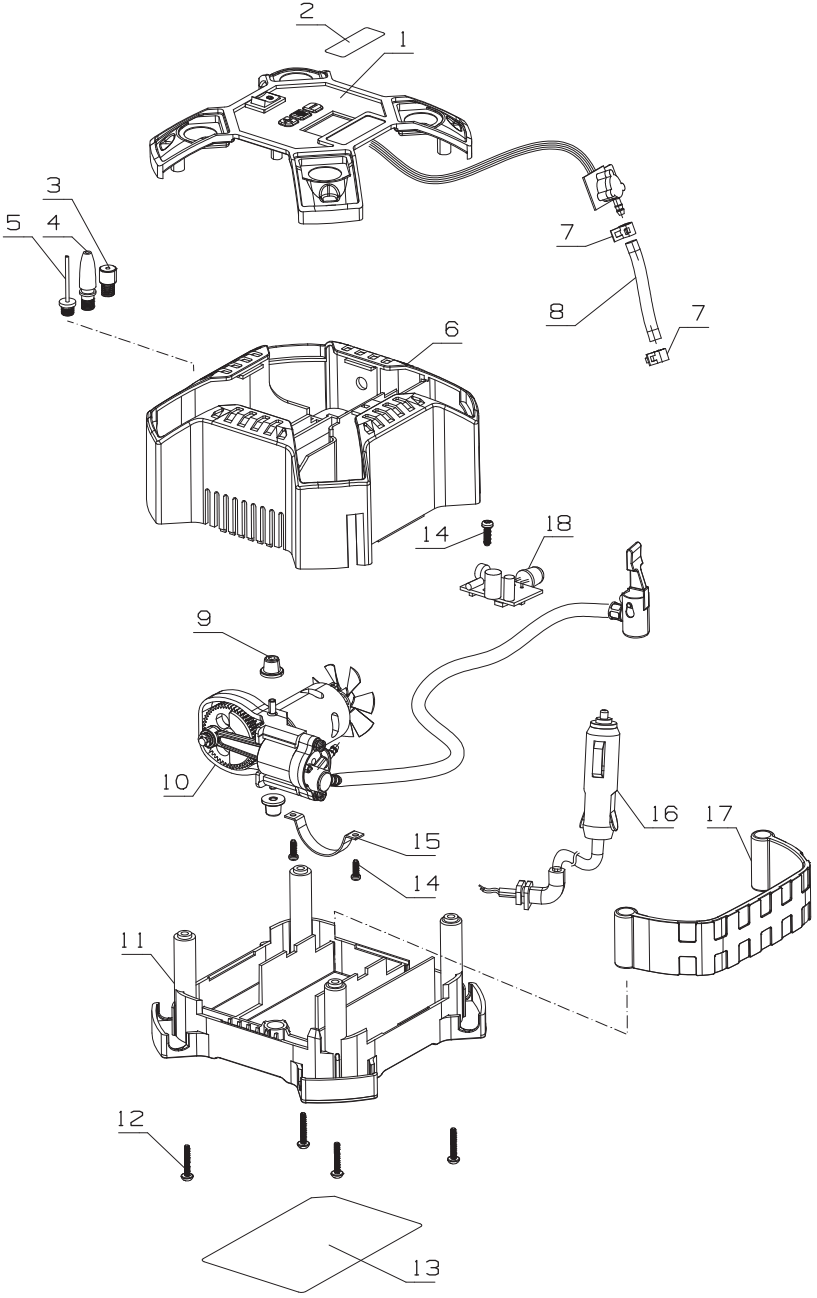
MAINTENANCE

Always ensure the auto air compressor is completely powered off and disconnected from any power source before performing maintenance. Clean the exterior housing regularly using a dry, soft cloth-ideally after each use. Keep the ventilation slots free from dust and debris. For stubborn dirt, use only a soft cloth lightly dampened with mild soap solution. Any solvents including gasoline, alcohol, ammonia-based cleaners, or other harsh chemicals that may degrade plastic components are strictly prohibited. The machine requires no additional lubrication during its service life.

RAC16001 AUTO AIR COMPRESSOR SPARE PARTS LIST

Exploded View NO.	Part Name	QTY
1	PCB Panel Assembly	1
2	LOGO Label	1
3	Presta Adapter	1
4	Nozzle Adapter	1
5	Ball Needle Adapter	1
6	Main Housing	1
7	7.0 Clamp	1
8	Sensor Connect Tube	1
9	Anti-vibration Foot	2
10	Pump Assembly	1
11	Rear Housing Cover	1
12	Screw	4
13	Technical Data Label	1
14	Screw	3
15	Motor Plate	1
16	12V Cigar Lighter Wire	1
17	Handle	1
18	LED Light Board	1

RAC16001 AUTO AIR COMPRESSOR EXPLODED VIEW



 **RANKOR**